

Remote Desktop for Mobiles

For iPhone and iPod Touch

Getting Started Guide

RDM+ : Remote Desktop for Mobiles consists of two components: the desktop part and the web service running on your iPhone or iPod touch.

- The RDM+ desktop part should be installed on the computer you want to access remotely.
- The client module is running from your Safari browser.

1. Starting RDM+ Web service

Point your Safari browser to: **iphone.rdmplus.com**

To ensure flawless work of RDM+ Web service you need to enable JavaScript in Safari. On your iPhone please go to **Settings / Safari** and check if JavaScript is ON.

2. Connecting to the demo computer

At first you can try to connect to our demo computer and make sure that the Web service works on your mobile device properly.

Just press **Demo** button on the **More** screen:



The demo computer works in demo mode. It only shows the work with the remote desktop and displays several examples of how to execute management commands. The complete list of management commands, mouse and keyboard controls is disabled.

3. Installing the desktop part on a computer

You should install the desktop part of RDM+ on each computer you want to access remotely. Run the installation executable file **rdmplus_iphone_desktop.exe** and follow instruction of installation wizard to completely install the product. You can download this file from our site: www.rdmplus.com/download/rdm

Note: For correct work of the desktop part, you should install this software with the account having administrator privileges on the local computer. All previous versions should be removed before installation.

After installation is successfully completed, start the **RDM Control Panel** application. You can find this item in Windows menu **Start — Programs — RDM+ — Control Panel**.

The icon of RDM+ control panel is also appeared on your taskbar. If the desktop part (RDM local service) works properly, it has **Online** status in control panel.



4. Start working with RDM+ desktop part

When you try to connect remotely to your computer, RDM+ desktop part should be running on your computer (it should have "Online" status in control panel).

RDM+ desktop part connects to RDM Online Service as usual Web browser (using HTTP requests through port 80), so it does not require direct access to the remote computer or others special router settings. But if in your local network the proxy server is used, you should specify the proxy settings before connecting to the RDM Online Service. In RDM+ desktop part, go to **Settings**, click **Proxy button** and enter all required information. Details about proxy settings, you can get from your Web browser.

That's how to get proxy settings from Internet Explorer: go to **Tools - Internet Settings - Connections TAB - LAN Settings**.

If your computer is not registered in RDM Online service yet, you should fill the registration form while installing the desktop part.

The screenshot shows a dialog box titled "RDM+ :: Register in RDM Online Service". The main text reads: "Your computer should be necessarily registered in RDM Online Service. Please specify your name and email address." Below this, there are three input fields: "Your name:" with the text "Antony", "Your email:" with "an@gmail.com", and "Re-type email:" with "an@gmail.com". To the right of these fields is a checkbox labeled "I already have registered computer number in RDM Online Service, and I want to assign it to this computer." which is currently unchecked. Below the checkbox is a text label "Enter Computer Identification Code:" followed by an empty input field. At the bottom left, there is a red note: "Note: The confirmation request will be sent to your email address. You should confirm your registration for the service. Please, make sure in accuracy of email you denote." At the bottom right, there are "Cancel" and "OK" buttons.

Note: Please enter existing email address in registration form exactly. You will receive automatic notification about registration to this email address. You should confirm or cancel your registration in RDM Online Service, by choosing one of web links in this email. Otherwise you will not be able to connect to your computer.

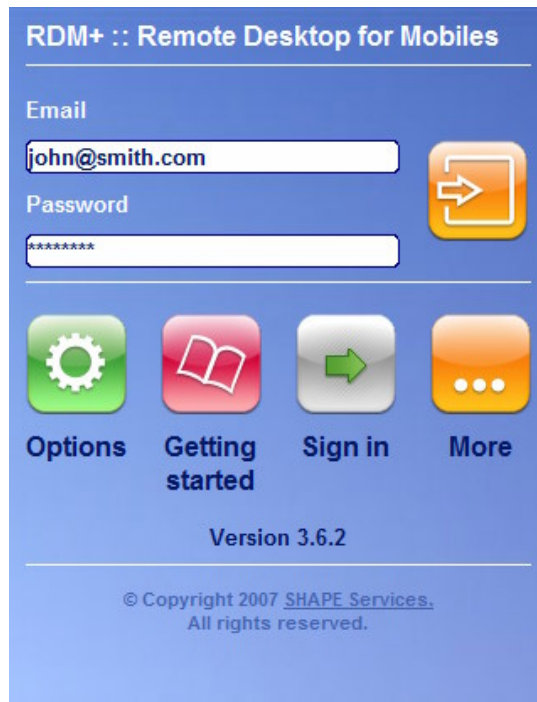
If connection to RDM Online Service is established successfully and registration is completed, the unique computer number will be assigned to your computer. You will see this number in the control panel under **Details**.

Note: Computer number "20 001 005" on the screenshot is an example. You will get your own computer number.

During registration procedure you need to create your account (user name and password) for remote access to your computer.

5. Working with an address book


Point your Safari browser to: iphone.rdmplus.com







RDM+ :: Remote Desktop for Mobiles

Email

Password



 **Options**  **Getting started**  **Sign in**  **More**

Version 3.6.2

© Copyright 2007 [SHAPE Services](#).
All rights reserved.

First of all you have to register for the RDM+ iPhone by filling a very simple form. To do this press **Sign in** button.



Sign in

Your name

Your email

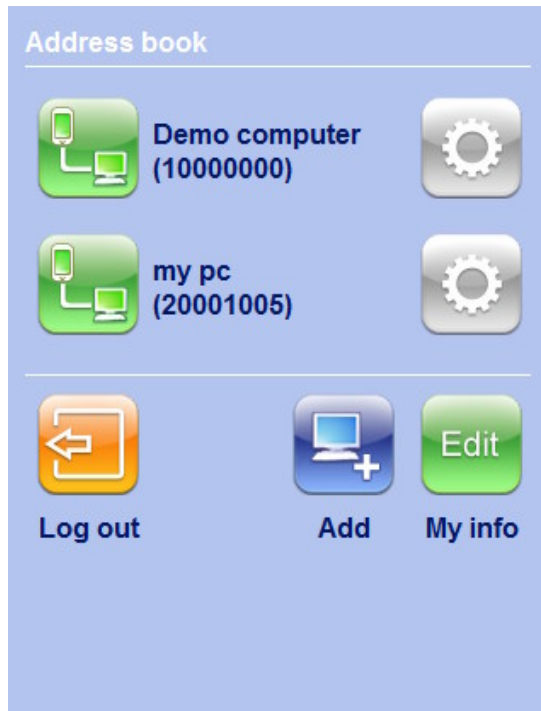
Enter a password

Confirm password

 **Back**  **Sign in**

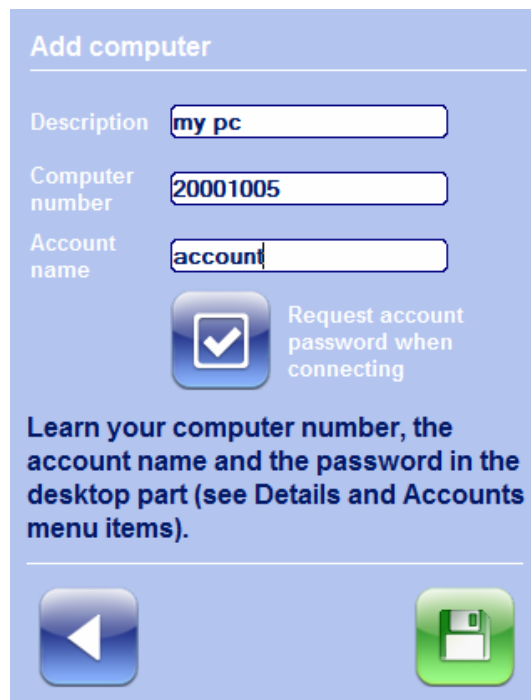
Using the email and password you will be able to access your own address book.

You can add a new computer to your address book, edit computer data and connect from your iPhone to the specific computer from the list.



Press **Add** button to add a new computer to the address book.

Note: The account name and the password must coincide with those you have entered in the desktop part during the installation. You can create an account or change the existing one by selecting **Accounts** in RDM+ control panel.



Note: The account name is case insensitive, but the password is case sensitive!



There is a connection parameter in the **Add computer** form. Using this parameter you can decide whether to ask you a password to the computer every time you connect to it or to store this password and never ask you.

The first way is safer and it is selected by default. But the second one is quicker. To change the value of the parameter press the button **Request account password when connecting** (It turns on and off like a checkbox does)

To edit the information which you entered during signing in, press **My info** button. To change the password, press **Password** button.

My info

Your email john@smith.com

Your name John

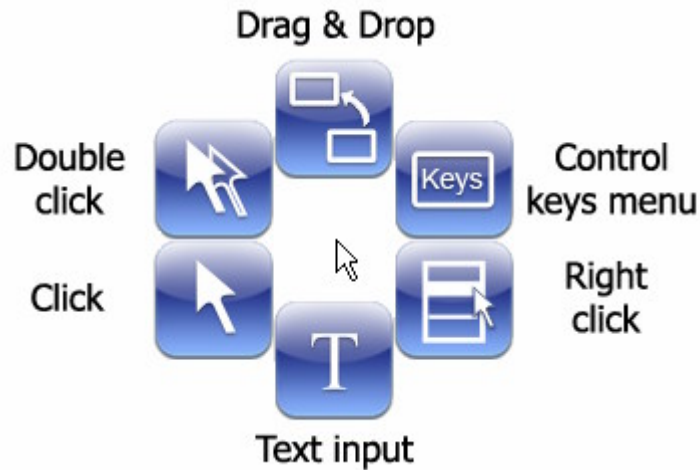
Password Sign out

Back Save

The **Sign out** button deletes your account including your address book from the RDM+ iPhone service.

6. Remote desktop control

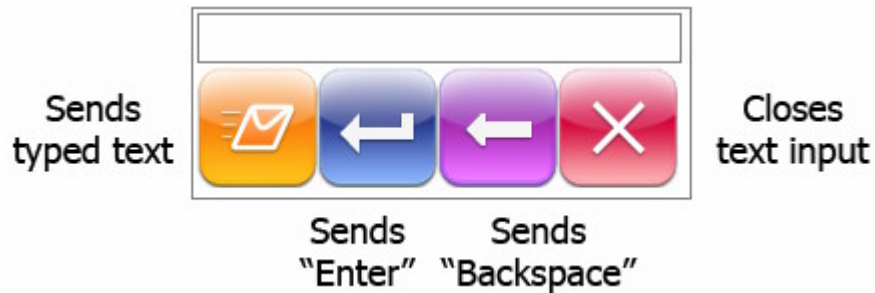
To control your remote computer use the main menu buttons. Tap on the screen and the menu will appear. The pointer in the center shows the mouse position on the remote computer.



Note: To drag an object tap the button and then tap where you want to drop it. Please, pay attention to the mouse cursor in the center of the menu. It should be placed on the object which you want to drag and drop.



- Text input. This area is used for entering text and sending it to the remote computer.



- Control keys menu.



Every button sends Esc, F1, Ctrl+Esc, Alt+F4, Ctrl+Alt+Del accordingly.

You can find more information about the Remote Desktop for Mobiles on our site:

www.rdmplus.com

If you need further assistance after reading this manual, please fill out our Support form:

www.rdmplus.com/support/rdm/iphone

Alternatively, you can send us an email at rdmsupport@shapeservices.com

Our Support Team will answer your email within two business days.